



HOW TO INSTALL THERMOPLASTIC EV BAY MARKINGS

By adhering to our simple step-by-step instructions, you will be able to expertly install our thermoplastic EV bay markings with ease. We'd recommend taking a training course if you're completely new to installing markings, but by following these guidelines you'll be able to complete the process successfully in no time.

IMPORTANT POINTS TO CONSIDER:

- Always wait 6-8 weeks before installing markings onto new tarmac.
- Never install new markings directly onto old markings – they will only last as long as the old ones. Need removals? [Contact us](#) for a quote from our sister company.
- Ensure the surface is dry before attempting to install the markings.

WHAT YOU'LL NEED:

- Barrier tape and cones
- [Surface primer](#)
- Safety gloves
- A roller
- Safety boots
- Tin snips
- A stiff bristle brush
- [A propane torch](#)
- A scraper
- [Anti-slip glass bead](#)
- [Chalk line](#)
- [EV bay marking](#)

Add [installation equipment](#) to your basket and order online.





STEP 1: PREPARE THE SURFACE

Before you start, make sure that your area is safe and cordoned off with barrier tape and cones. Preparing the surface is crucial to a successful installation so make sure you're thorough with the following instructions. Begin by cleaning the area where you will be installing the EV bay marking. Use a stiff bristle brush to sweep away any dirt, moss, or debris, and use a scraper to remove any loose or chipped pavement. This will ensure that the EV bay marking will adhere properly to the surface. If the area is particularly dirty, you may want to consider jet washing it first. In any case, the surface will need to be completely dry before installing the new marking.



STEP 2: MARK OUT THE DESIGN

Use a string line and chalk to mark out the correct measurements provided on the specification sheet. Depending on the design, this is sometimes made easier with two people, but it is possible to do it with only one person by placing a weight on the line.

STEP 3: PRIME THE AREA

It's important to note here that if the tarmac is less than a year old, you can skip ahead to step 4. Preparation is key so make sure your surface is dry before you start this step. Using a quality [surface primer](#) and a roller, prime the area where the new marking is going and wait for it to dry. This usually takes around 5-10 minutes depending on the time of year. One thing to look out for here is if the primer looks chalky and hasn't dried clear, the surface isn't dry enough. In this case, you would need to heat the surface and reprime.



STEP 4: POSITION THE MARKING

Lay the new EV bay marking on the ground, making sure it's in the right place. If you're also marking out the parking bay in thermoplastic line, follow your chalk line. At the end of each parking line, you can either cut the strip with a tin snip or snap the end.



STEP 5: HEAT THE MARKING

Once your marking is in place, use a [propane torch](#) to heat the marking until it is molten to ensure proper adhesion to the surface. Be cautious during this step as too much heat can cause the marking to burn, and not enough heat can result in poor bonding to the tarmac and the marking will fail. Keep the tip of the torch approximately 20-30cm away from the marking and move it back and forth until it reaches the desired consistency.

PRO TIP: A good indicator that the marking is heated enough is when the edges of the marking start to widen slightly and the surface appears to bubble, similar to melting cheese on toast!

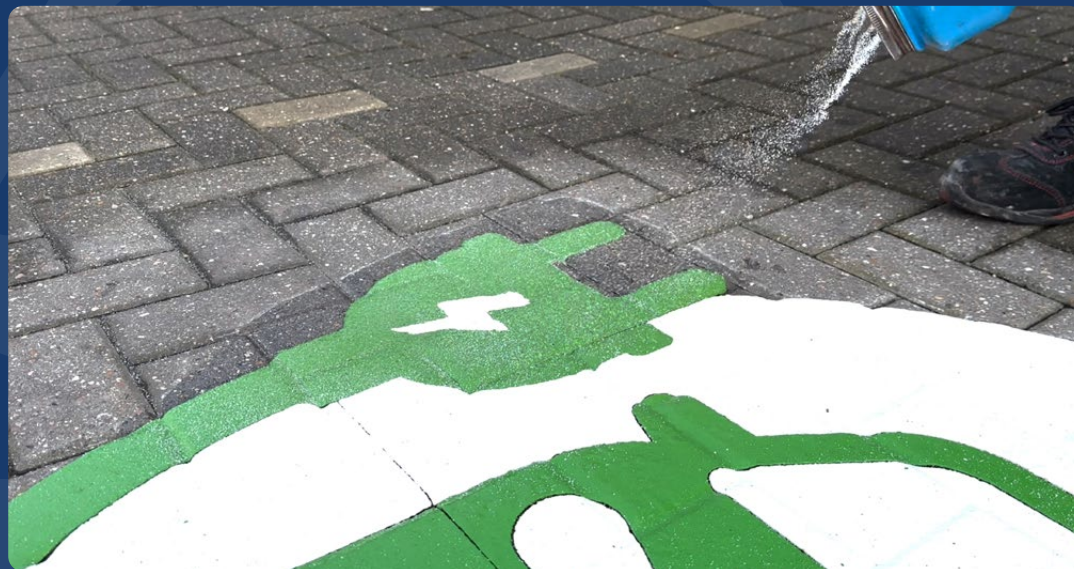




STEP 6: APPLY GLASS BEAD

Though the thermoplastic material we supply has built-in anti-slip glass bead which will last its whole lifespan, we recommend ensuring initial slip resistance for safety. Sprinkle your **glass bead** onto the marking around 20-30 seconds after you have finished heating it. This will vary throughout the year but it's best to apply it while the material is still molten so that the glass sinks into the very top layer. Repeat this between heating each section of the marking.

Be careful here, a hasty application can cause the glass bead to embed too deeply into the material, rendering it ineffective. Equally, if you delay the application, the marking will have cooled too much, causing the glass bead to sit on top, and be easily blown away by a gust of wind.



HOW LONG BEFORE YOU CAN USE YOUR EV BAY MARKINGS

After installation, your EV bay marking will be ready to walk on in around 15 minutes, depending on the time of year. In some cases, you can drive on it in as little as 15 minutes, but we would recommend leaving it a couple of hours. If you need to speed up this process, on a particularly hot day, you can cool the marking by pouring water over it.

And that's all there is to it! With these simple steps, you'll be able to successfully install our thermoplastic EV bay markings. If you have any questions or are unsure about any of the steps above – just ask our expert team. We will gladly help you.